

MITO 10

Multipurpose **Drilling Rig**

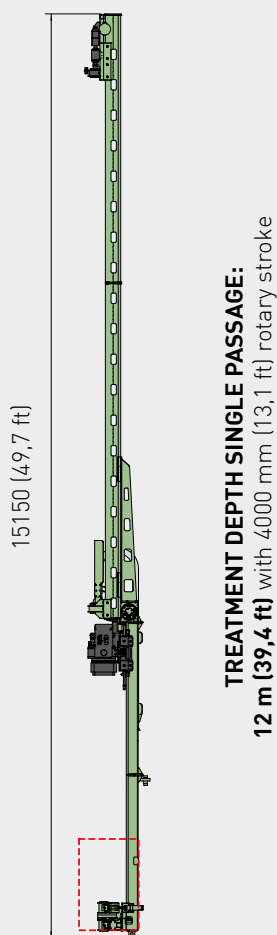


ITALIAN DRILLING RIGS
MANUFACTURERS SINCE 1964

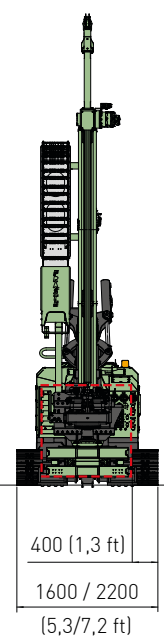
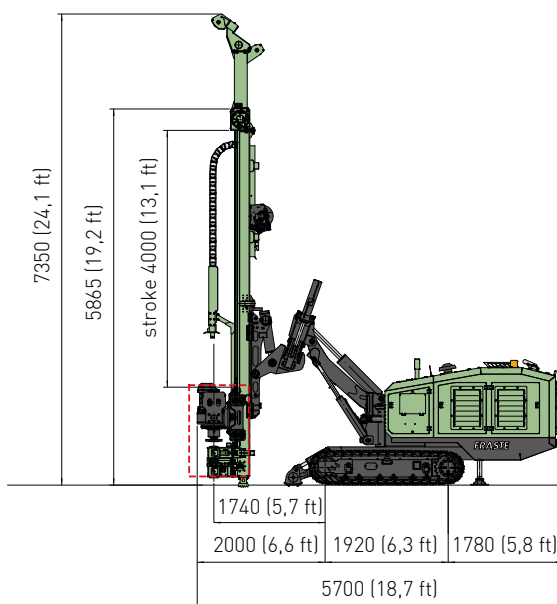
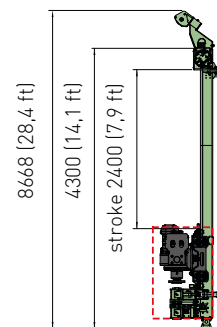
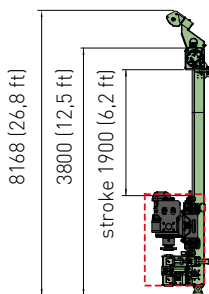
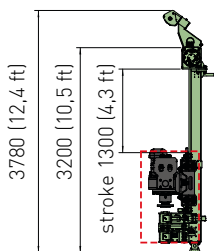


JET GROUTING CONFIGURATION

DIMENSIONS

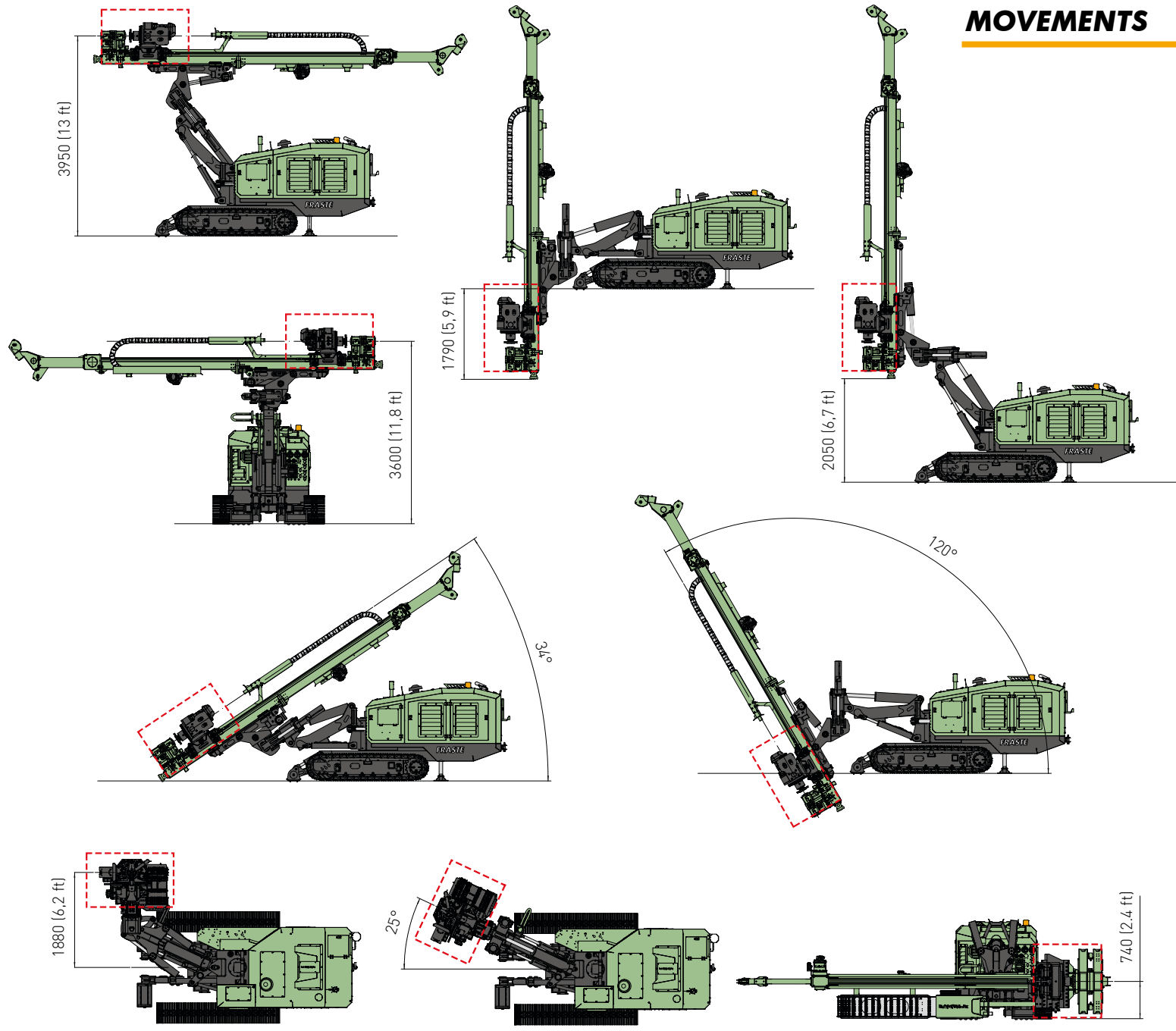


TREATMENT DEPTH SINGLE PASSAGE:
12 m (39,4 ft) with 4000 mm (13,1 ft) rotary stroke

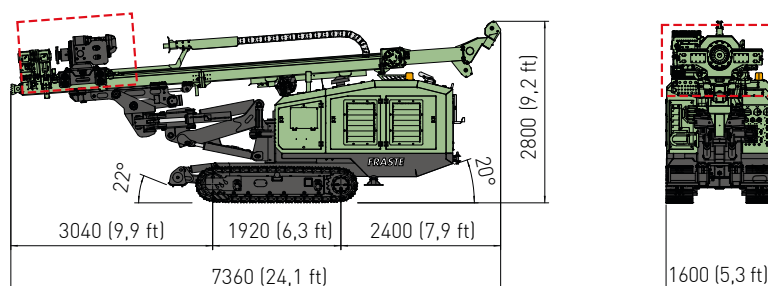


| MOTORE DIESEL | DIESEL ENGINE | |
|-----------------------------------|-------------------------|---|
| Potenza | Power | CAT C4.4 - Stage V - Tier 4 F - 110 kW (148 HP) CAT C4.4 - Stage IIIA - Tier 3 - 106 kW (142 HP) |
| Capacità serbatoio gasolio | Fuel tank capacity | 150 l (39,6 gal) |
| Capacità serbatoio olio idraulico | Oil tank capacity | 310 l (82 gal) |
| ANTENNA | MAST | |
| Corsa testa di rotazione | Rotary head stroke | 1300-1900-2400-4000 mm / (4,3- 6,2-7,9-13,1 ft) |
| Tiro nominale | Nominal Pull-up force | 7600 daN (17080 lbf) |
| Spinta nominale | Nominal Pull-down force | 7600 daN (17080 lbf) |
| TESTA ROTANTI | ROTARY HEADS | |
| Coppia max. | Max. torque | 1460-1900-2400-2800 daNm (10768-14013-17701- 20651 lbf*ft) |
| Velocità max. | Max. speed | 190-145-115-100 rpm |
| MORSE | CLAMP AND BREAKER | |
| Diametro | Diameter | 48-260 mm (1,9"-10,2") / 60-360 mm (2,4"-14,2") |
| PESO | WEIGHT | ~9900 Kg (~21800 lbf) |

MOVEMENTS



TRANSPORT CONFIGURATION



MITO 10

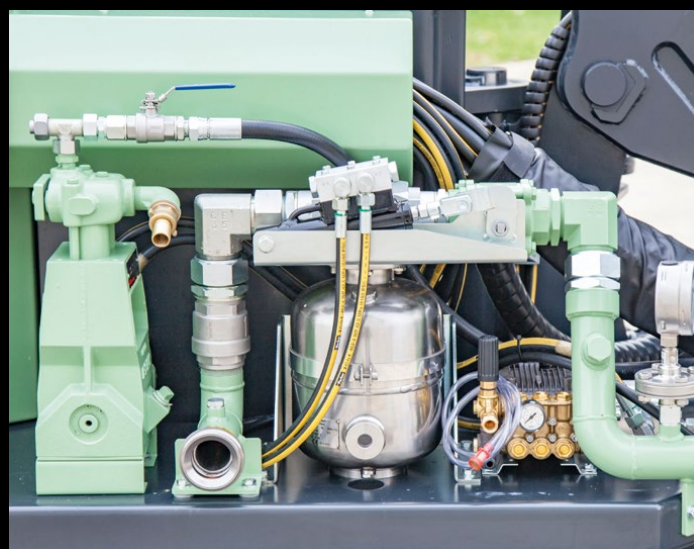
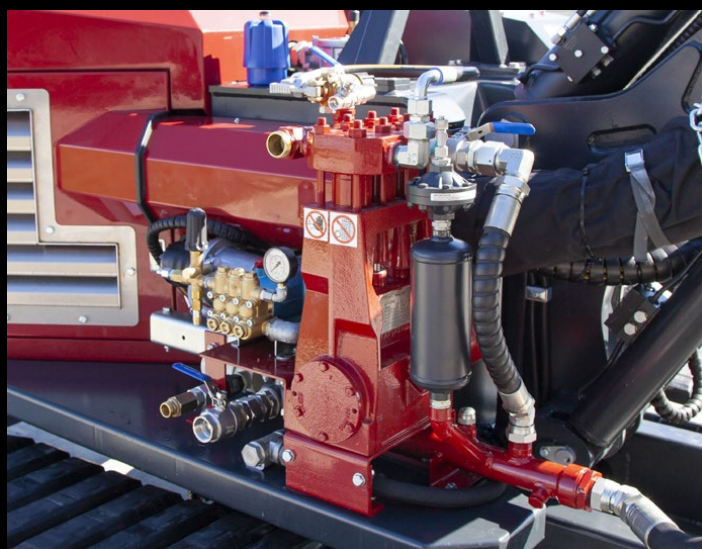
Innovation, Power, Versatility.



ACCESSORI - ACCESSORIES

| | | |
|-----------------------------------|-----------------------------------|---|
| Martello idraulico | Hydraulic drifter | |
| Verricello wire line | Wire line winch | |
| Pompa triplex | Triplex pump | 160 l/min - 48 bar / (42 gpm - 700 PSI) |
| Pompa schiuma | Foam pump | 34 l/min - 38 bar / (9 gpm - 550 PSI) |
| Pompa lavaggio | Washing pump | 15 l/min - 150 bar / (4 gpm - 2175 PSI) |
| Lubrificatore di linea | Line lubricator | 8,5 l/min - (2,25 gpm) |
| Testa alta velocità per carotaggi | High speed rotary head for coring | |
| Jet grouting kit | Jet grouting kit | 12 m (39 ft 5") |
| Cilindri estrattori | Casing extractors | |
| Inclinometro elettronico | Electronic inclinometer | |

ALTRI OPTIONAL DISPONIBILI A RICHIESTA - OTHER OPTIONALS ARE AVAILABLE ON REQUEST



I dati esposti sul presente catalogo possono variare senza preavviso - Specifications may change without notice